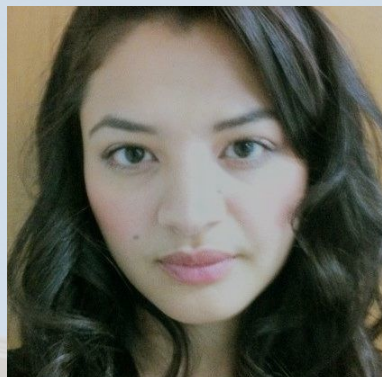


Women of Color in the Mathematical Sciences

Keynote addresses will take place over networking luncheons in the Sagamore Restaurant of the Memorial Union.
Research talks will start at 3:30 PM in Room 121 of the Recitation Building.

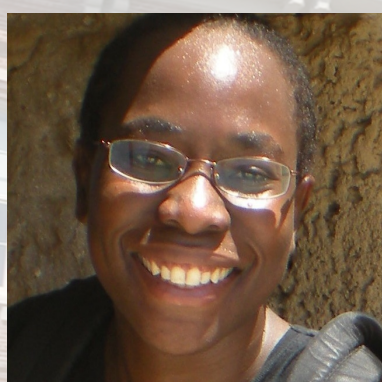


Friday, June 29, 2012

Luncheon Keynote: **Promoting Scientific Research**

Research Talk: **It's No Lie: I Study Representations of Lie Algebras**

Dr. Pamela E. Harris is a Mexican-American Mitchem Fellow Scholar in Mathematics at Marquette University, but she will be an Assistant Professor of Mathematics at the United States Military Academy at West Point in the fall. She graduated from the University of Wisconsin at Milwaukee in May 2012. Her research interests concern the representation theory of Lie algebras.

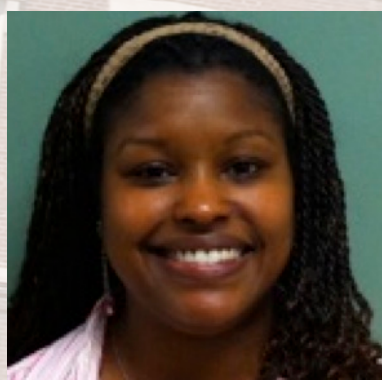


Friday, July 6, 2012

Luncheon Keynote: **There and Back Again**

Research Talk: **Curves, Sums, and Maximality**

Dr. Lois Simon is an African-American lecturer in Mathematics at Howard University. She graduated from Howard in May 2011. Her research interests concern sums of characters of finite fields.



Friday, July 13, 2012

Luncheon Keynote: **A Few Seconds Can Create a Long-Lasting Impact**

Research Talk: **C^* -Algebras Associated to Topological k -Graphs and Exel-Larsen Systems**

Dr. Paulette N. Willis is an African-American NSF Postdoctoral Fellow in Mathematics at the University of Houston. She graduated from the University of Iowa in May 2010. Her research interests concern C^* -algebras of labeled graphs and $*$ -commuting endomorphisms.



Friday, July 20, 2012

Luncheon Keynote: **Taking the Initiative in Securing Grants**

Research Talk: **Theoretical and Numerical Results on the Smallest Enclosing Ball Problem and the Smallest Intersecting Ball Problem**

Dr. Cristina Villalobos is a Mexican-American Associate Professor in the Department of Mathematics at the University of Texas-Pan American who is the Director of the Center of Excellence in STEM Education. She graduated from Rice University in May 2000. Her research interests lie in linear and nonlinear optimization as well as their applications.



Friday, July 27, 2012

Luncheon Keynote: **Tenure Times Two: How Earning Tenure Once Gave Me the Courage to Go For It Again**

Research Talk: **DCT and DDE: Using Delay-Differential Equations to Model Dendritic Cell Therapies for Cancer**

Dr. Angela Gallegos is a Mexican-American Associate Professor of Mathematics at Loyola Marymount University. She graduated from the University of California at Davis in September 2005. Her research interests concern applications of mathematics to biology and physiology.

With funding from the ADVANCE – Purdue and the Center for Faculty Success and modeled after Faculty Advancement, Success and Tenure (FAST), Purdue University will host “ADVANCE PRiME: Purdue Research in Mathematics Experience.” This summer program seeks to build a community of underrepresented minorities in the mathematical sciences, focusing on undergraduate and graduate students in mathematics, statistics, and mathematics education. For more information, contact Dr. Alejandra Alvarado at (765) 494-1423 or alvaraa@math.purdue.edu; or Dr. Edray Goins at (765) 494-1936 or egoins@math.purdue.edu.